



Government of India
Ministry of Earth Sciences



India Meteorological Department

PRESS RELEASE-1

Time of issue: 1500 hours IST

Dated: 20th October, 2024

Subject: Cyclonic Disturbance likely to develop over Bay of Bengal and affect Odisha-West Bengal coasts during 23rd-25th October: Pre-Cyclone Watch

A cyclonic circulation lay over central Andaman Sea on 19th October. It lay over North Andaman Sea in the early morning (0530 hours IST) and persisted over the same region in the forenoon (0830 hrs IST) of today, the 20th October 2024. Under its influence, a Low Pressure Area is very likely to form over the Eastcentral Bay of Bengal and adjoining north Andaman Sea during next 24 hours.

It is very likely to move west-northwestwards and intensify into a depression by 22nd October morning and into a cyclonic storm by 23rd October, 2024 over Eastcentral Bay of Bengal. Thereafter, it is very likely to move northwestwards and reach northwest Bay of Bengal off Odisha-West Bengal coasts by 24th October morning.

Warnings:

(i) Rainfall Warning:

- ❖ Light to moderate rainfall at most places with **heavy to very heavy rainfall (7-20 cm)** at isolated places is very likely over Andaman Islands on 20th & 21st October.
- ❖ Light to moderate rainfall at most places with **heavy rainfall (07-11 cm)** at isolated places is very likely over Odisha on 23rd & **heavy to very heavy rainfall** at a few places and **extremely heavy rainfall (≥ 21 cm)** at isolated places on 24th & 25th October.
- ❖ **Light to moderate rainfall at most places with heavy rainfall** at isolated places is very likely over **coastal districts of West Bengal** on 23rd and heavy to very heavy rainfall at a few places over Gangetic West Bengal on 24th & 25th October.
- ❖ Light to moderate rainfall at many places with **heavy rainfall** at isolated places is very likely over North coastal Andhra Pradesh on 24th and 25th October.

(ii) Wind Warning:

Andaman Sea: Squally weather with wind speed reaching 35-45 gusting to 55 kmph is very likely over Andaman Sea till 21st October.

Eastcentral Bay of Bengal: Squally wind speed reaching 40-50 gusting to 60 kmph is very likely on 21st October, 55-65 gusting to 75 kmph by 22nd evening, 70-90 kmph gusting to 100 kmph from 23rd evening till 24th morning.

Adjoining areas of Westcentral Bay of Bengal: Squally wind speed reaching 45-55 gusting to 65 kmph is very likely on 23rd and 24th Oct.

Contact: Cyclone Warning Division, Office of the Director General of Meteorology, India Meteorological Department, Ministry of Earth Sciences, E-mail: cyclonewarningdivision@gmail.com, Website: rsmcnewdelhi.imd.gov.in, Spatial rainfall distribution: Isolated: <25%, A few: 26-50%, Many: 51-75%, Most: 76-100%, Rainfall amount (mm): Heavy rain: 64.5 – 115.5, Very heavy rain: 115.6 – 204.4, Extremely heavy rain: 204.5 or more.

North Bay of Bengal: Squally wind speed reaching 40-50 gusting to 60 kmph is very likely to commence from 23rd morning. It would gradually increase becoming gale wind speed reaching 100-110 kmph gusting to 120 kmph from 24th Oct evening to 25th Oct morning and decrease thereafter.

Along & off Odisha-west Bengal coasts: Squally wind speed reaching 40-50 gusting to 60 kmph is very likely to commence from 23rd Oct evening. It would gradually increase becoming gale wind speed reaching 100-110 kmph gusting to 120 kmph from 24th Oct night till 25th Oct morning.

(iii) Sea Condition:

Andaman Sea: Sea condition is likely to be **Moderate to Rough till 21st October.**

Eastcentral Bay of Bengal: Sea condition is likely to become **Rough to Very Rough** from **21st Oct morning to 22nd October evening, becoming very rough to high thereafter till 24th Oct morning.**

Adjoining areas of Westcentral Bay of Bengal: Sea condition is likely to be **Rough to Very Rough** on 23rd and 24th Oct.

North Bay of Bengal: Sea condition is likely to be **Rough to Very Rough** from **23rd morning** and would become **High** from **24th Oct morning till 25th Oct forenoon.**

Along & off Odisha-west Bengal coasts: Sea condition is likely to be **Rough to Very Rough** from **23rd evening** and would become **High** from **24th Oct evening to 25th Oct forenoon.**

(iv) Fishermen Warning:

Fishermen are advised not to venture into

- Andaman Sea till 21st October.
- Eastcentral Bay of Bengal during 21st-24th October.
- **Adjoining areas of Westcentral Bay of Bengal on 23rd and 24th Oct.**
- **North Bay of Bengal** and along & off Odisha, West Bengal and Bangladesh coasts during 23rd to 25th Oct.

Fishermen out at sea are advised to return to coasts by 21st Oct.

(v) Impact Expected [along Odisha and West Bengal coasts due to heavy rainfall]

- Localized Flooding of roads, water logging in low lying areas and closure of underpasses mainly in urban areas of the above region.
- Occasional reduction in visibility due to heavy rainfall.
- Disruption of traffic in major cities and roadways due to water logging in roads and poor visibility due to heavy rain leading to increased travel time and incidents
- Localized Landslides/Mudslides/landslips/mud slips/land sinks/mud sinks.
- Likely disruption of marine and inland water transportation like small boats and trawlers.
- Minor damage to kutcha roads.
- Possibilities of damage to vulnerable structure. Breaking of tree branches and uprooting of trees.
- Damage to power and communication lines.
- Damage to horticulture and standing crops in some areas due to inundation and wind.
- It may lead to riverine flooding in some river catchments (for riverine flooding please visit Webpage of Central Water Commission)

Contact: Cyclone Warning Division, Office of the Director General of Meteorology, India Meteorological Department, Ministry of Earth Sciences, E-mail: cyclonewarningdivision@gmail.com, Website: rsmcnewdelhi.imd.gov.in, Spatial rainfall distribution: Isolated: <25%, A few: 26-50%, Many: 51-75%, Most: 76-100%, Rainfall amount (mm): Heavy rain: 64.5 – 115.5, Very heavy rain: 115.6 – 204.4, Extremely heavy rain: 204.5 or more.

❖ **Action Suggested [affected areas of Odisha and West Bengal due to heavy rainfall]**

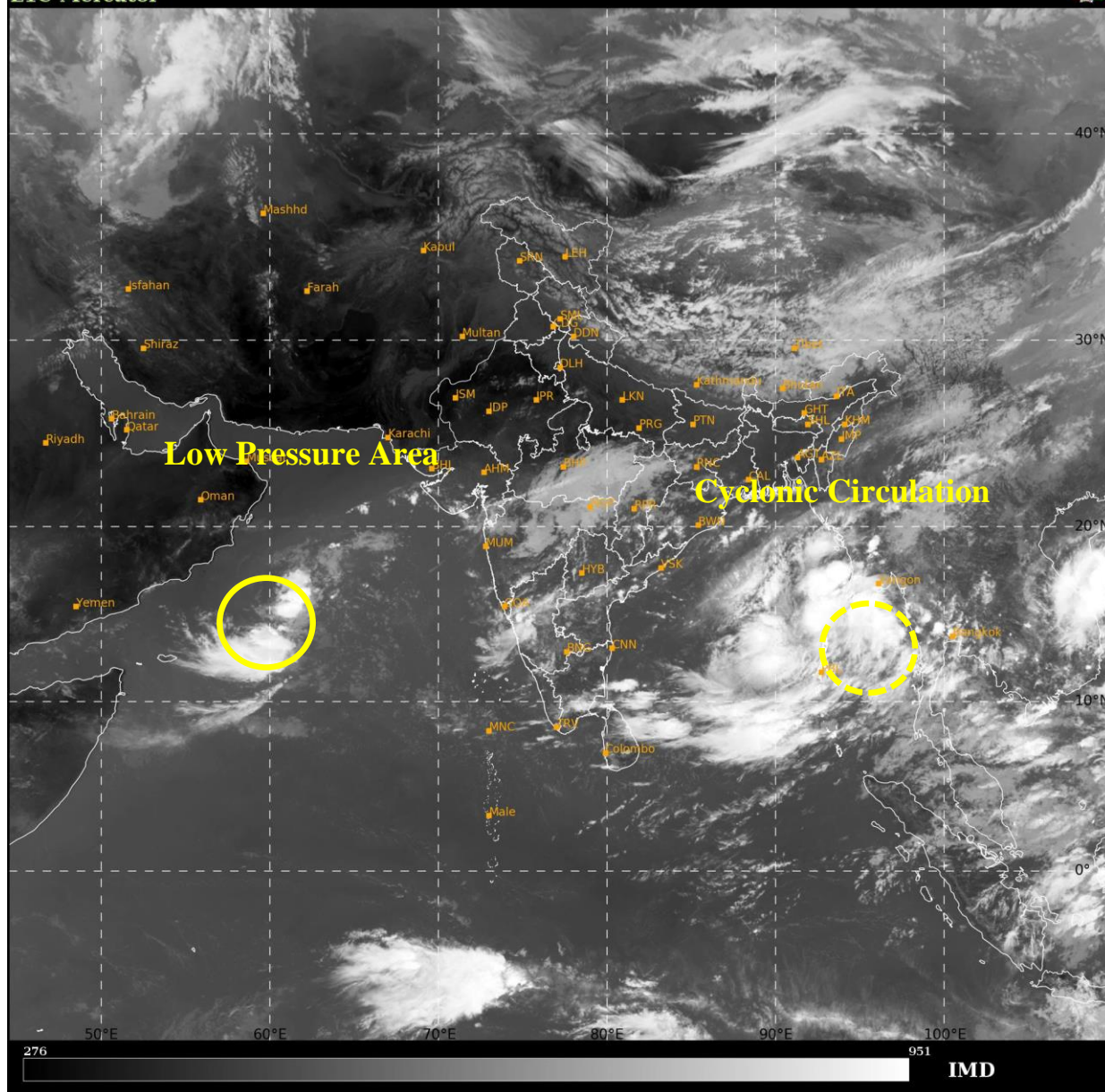
- Fishermen are advised not to venture into
 - ✓ Andaman Sea till 21st October.
 - ✓ Eastcentral Bay of Bengal during 21st-24th October.
 - ✓ **Adjoining areas of Westcentral Bay of Bengal on 23rd and 24th Oct.**
 - ✓ **North Bay of Bengal** and along & off Odisha-West Bengal coasts during 23rd to 25th Oct. morning.
- Fishermen out at sea are advised to return to coasts by 21st October.
- Total suspension of fishing operations during 22nd to 25th Oct over Central and North Bay of Bengal.
- Judicious regulation of onshore/offshore, Port and maritime activities including shipping.
- Judicious regulation of tourism activities in Andaman & Nicobar Islands.
- Judicious regulation of surface transports including railways and roadways.
- Check for traffic congestion on your route before leaving for your destination.
- Follow any traffic advisories that are issued in this regard.
- Avoid going to areas that face the water logging problems often.
- Avoid staying in vulnerable structure.

Next Press Release will be issued at 1430 hours IST of tomorrow, the 21st October, 2024.

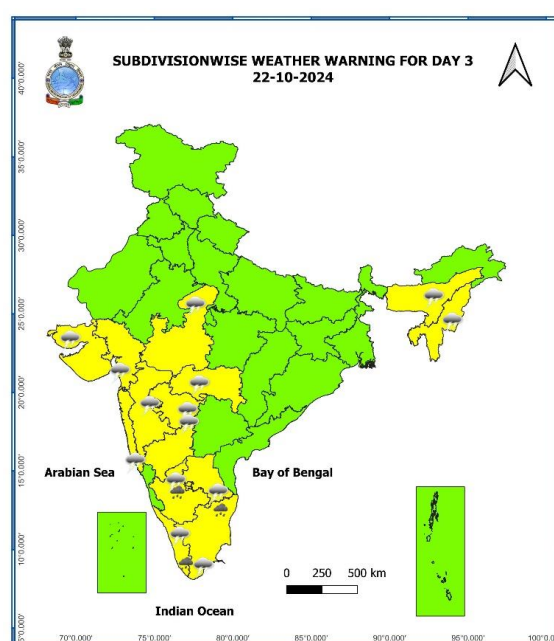
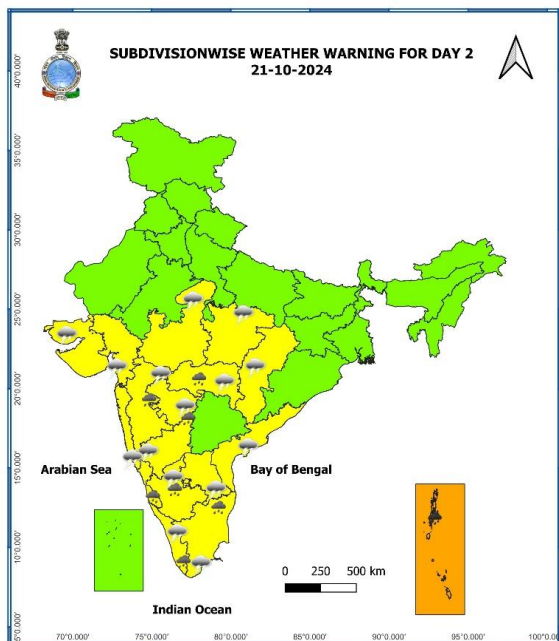
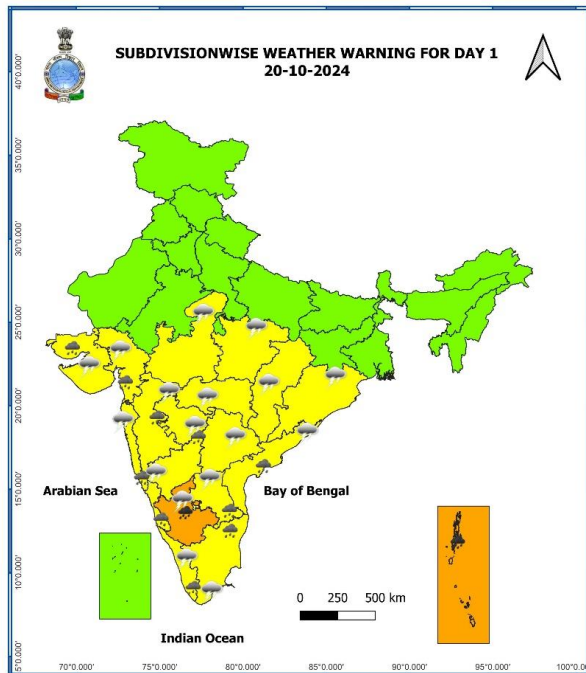
Contact: Cyclone Warning Division, Office of the Director General of Meteorology, India Meteorological Department, Ministry of Earth Sciences, E-mail: cyclonewarningdivision@gmail.com, Website: rsmcnewdelhi.imd.gov.in, Spatial rainfall distribution: Isolated: <25%, A few: 26-50%, Many: 51-75%, Most: 76-100%, Rainfall amount (mm): Heavy rain: 64.5 – 115.5, Very heavy rain: 115.6 – 204.4, Extremely heavy rain: 204.5 or more.

SAT : INSAT-3S IMG
IMG_TIR1 10.8 um
LIC Mercator

20-10-2024/(0630 to 0657) GMT
20-10-2024/(1200 to 1227) IST



Contact: Cyclone Warning Division, Office of the Director General of Meteorology, India Meteorological Department, Ministry of Earth Sciences, E-mail: cyclonewarningdivision@gmail.com, Website: rsmcnewdelhi.imd.gov.in, Spatial rainfall distribution: Isolated: <25%, A few: 26-50%, Many: 51-75%, Most: 76-100%, Rainfall amount (mm): Heavy rain: 64.5 – 115.5, Very heavy rain: 115.6 – 204.4, Extremely heavy rain: 204.5 or more.



- Fog
- Heavy Rain
- Very Heavy Rain
- Extremely Heavy Rain
- Thunder & Lightning
- Hailstorm
- Dust Raising Winds
- Heavy Snow
- Dust Storm
- Heat Wave
- Warm Night
- Hot & Humid
- Cold Wave
- Cold Day
- Ground Frost
- Hot Day
- Strong Surface Winds

COLOUR CODED WARNING

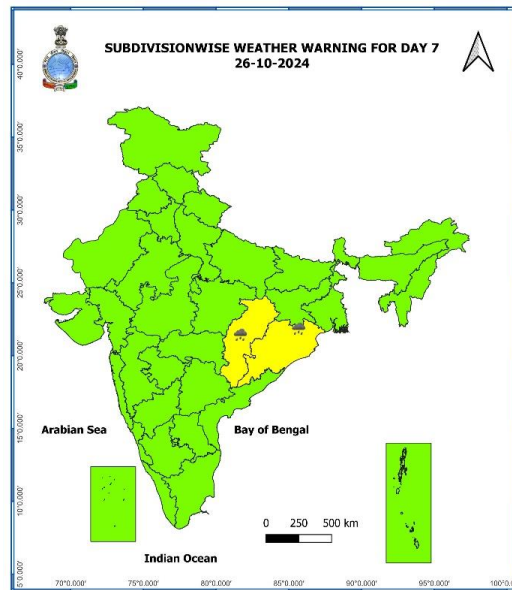
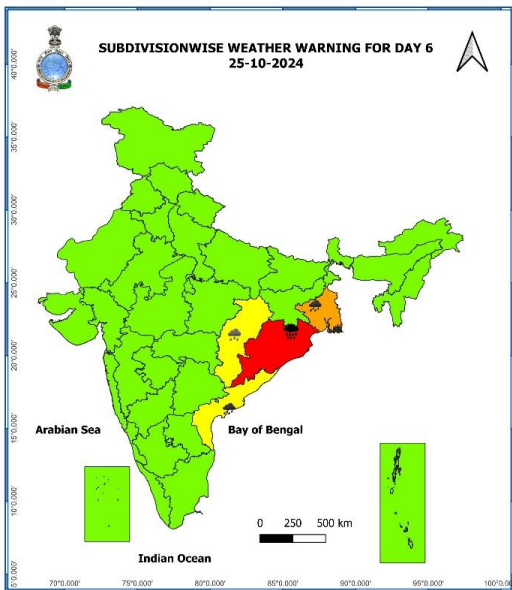
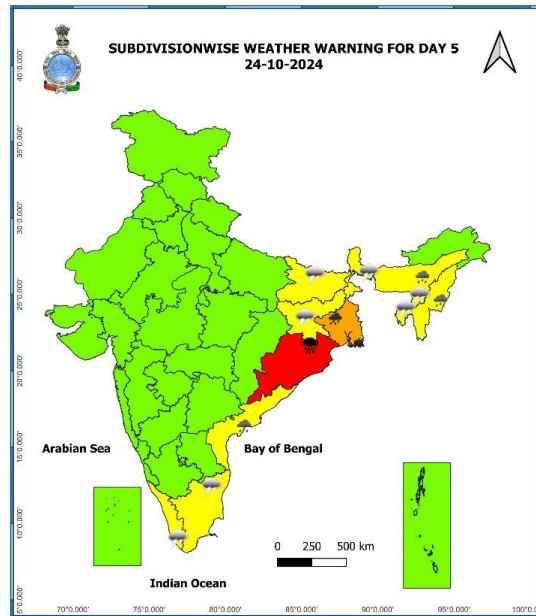
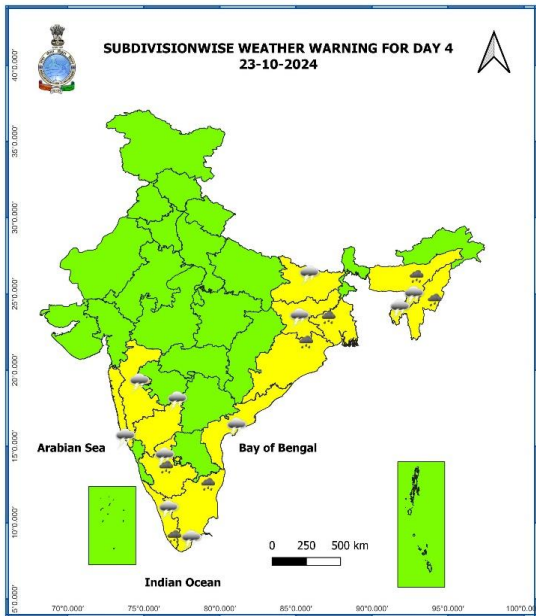
- No Warning (No Action)
- Watch (Be Aware)
- Alert (Be Prepared To Take Action)
- Warning (Take Action)

Probabilistic Forecast

Terms	Probability of Occurrence (%)
Unlikely	< 25
Likely	25 - 50
Very Likely	50 - 75
Most Likely	> 75

Director General of Meteorology, India Meteorological
 Mail: cyclonewarningdivision@gmail.com, Website:

smcnewdelhi.imd.gov.in, Spatial rainfall distribution: Isolated: <25%, A few: 26-50%, Many: 51-75%, Most: 76-100%, Rainfall amount (mm): Heavy rain: 64.5 – 115.5, Very heavy rain: 115.6 – 204.4, Extremely heavy rain: 204.5 or more.



- Fog
- Heavy Rain
- Very Heavy Rain
- Extremely Heavy Rain
- Thunder & Lightning
- Hailstorm
- Dust Raising Winds
- Heavy Snow
- Dust Storm
- Heat Wave
- Warm Night
- Hot Day
- Hot & Humid
- Cold Wave
- Cold Day
- Ground Frost
- Strong Surface Winds

COLOUR CODED WARNING

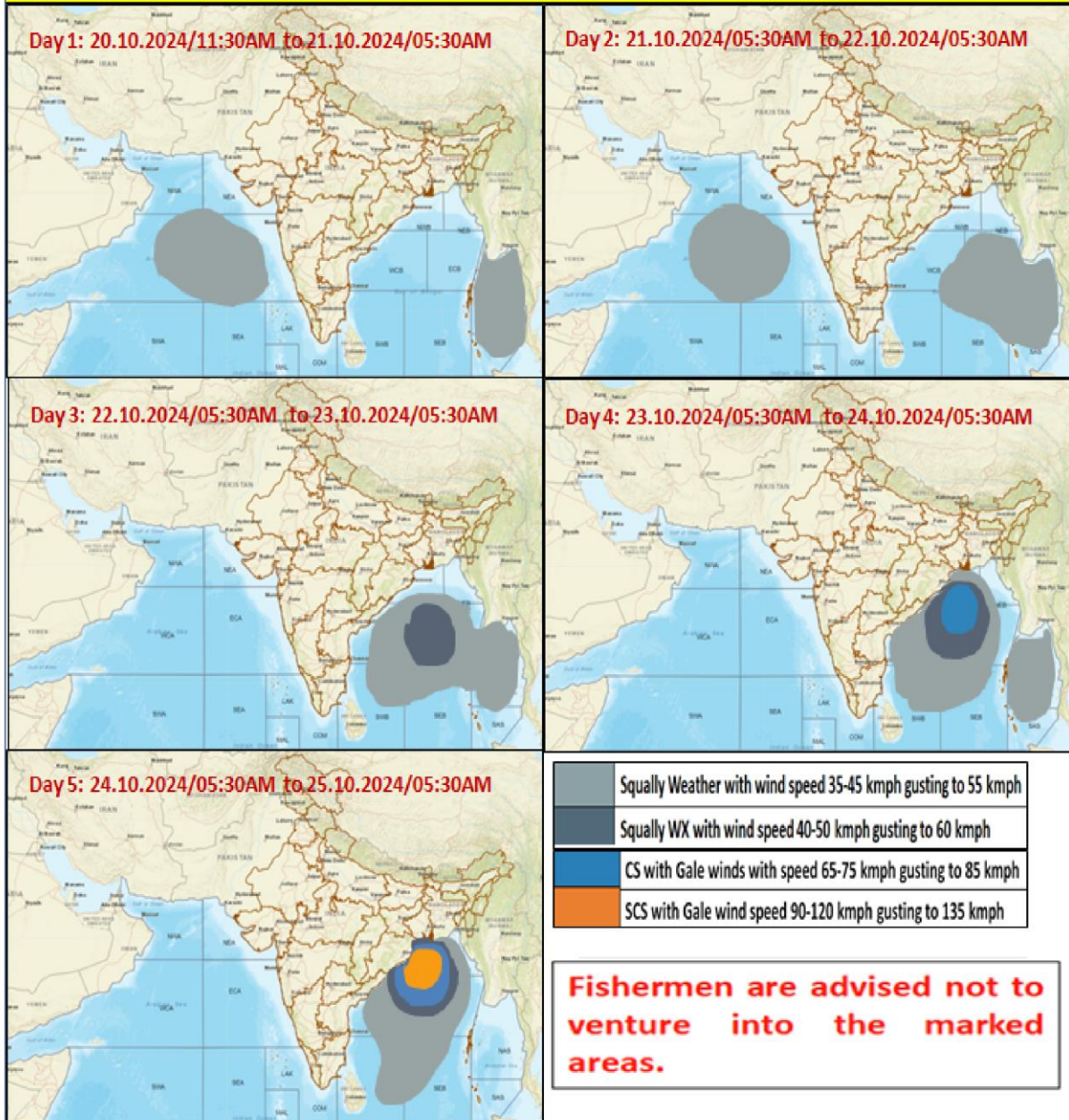
- No Warning (No Action)
- Watch (Be Aware)
- Alert (Be Prepared To Take Action)
- Warning (Take Action)

Probabilistic Forecast

Terms	Probability of Occurrence (%)
Unlikely	< 25
Likely	25 - 50
Very Likely	50 - 75
Most Likely	> 75

Contact: Cyclone Warning Division, Office of the Director General of Meteorology, India Meteorological Department, Ministry of Earth Sciences, E-mail: cyclonewarningdivision@gmail.com, Website: rsmcnewdelhi.imd.gov.in, Spatial rainfall distribution: Isolated: <25%, A few: 26-50%, Many: 51-75%, Most: 76-100%, Rainfall amount (mm): Heavy rain: 64.5 – 115.5, Very heavy rain: 115.6 – 204.4, Extremely heavy rain: 204.5 or more.

Fishermen Warning Graphics



Contact: Cyclone Warning Division, Office of the Director General of Meteorology, India Meteorological Department, Ministry of Earth Sciences, E-mail: cyclonewarningdivision@gmail.com, Website: rsmcnewdelhi.imd.gov.in, Spatial rainfall distribution: Isolated: <25%, A few: 26-50%, Many: 51-75%, Most: 76-100%, Rainfall amount (mm): Heavy rain: 64.5 – 115.5, Very heavy rain: 115.6 – 204.4, Extremely heavy rain: 204.5 or more.